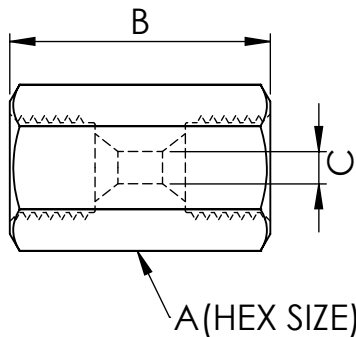


2

1

PROPRIETARY AND CONFIDENTIAL

THE INFORMATION CONTAINED IN THIS DRAWING IS THE SOLE PROPERTY OF PRESSURELINKS. ANY REPRODUCTION IN PART OR AS A WHOLE WITHOUT THE WRITTEN PERMISSION FROM PRESSURLINKS IS PROHIBITED.



DESCRIPTION	PL PART #	(A) HEX	(B) OAL	(C) THRU ϕ	WEIGHT(LBS)
1/4 JIC FEM X 1/4 JIC FEM	4JF04JF15	0.625	1.13	0.140	.08
1/4 JIC FEM X 3/8 JIC FEM	4JF06JF15	0.750	1.25	0.140	.13
1/4 JIC FEM X 1/2 JIC FEM	4JF08JF15	0.875	1.38	0.140	.19
3/8 JIC FEM X 3/8 JIC FEM	6JF06JF15	0.750	1.30	0.203	.12
3/8 JIC FEM X 1/2 JIC FEM	6JF08JF15	0.875	1.41	0.203	.18
1/2 JIC FEM X 1/2 JIC FEM	8JF08JF15	0.875	1.42	0.312	.15
3/4 JIC FEM X 3/4 JIC FEM	12JF12JF10	1.250	1.80	0.500	.37
3/4 JIC FEM X 1 JIC FEM	12JF16JF10	1.500	1.95	0.500	.64
1 JIC FEM X 1 JIC FEM	16JF16JF10	1.500	1.89	0.750	.49

PressureLinks
High Performance Fittings

TITLE:

**502 JIC FEMALE X JIC FEMALE
MASTER LIBRARY**

SIZE

A

DWG. NO.

JIC FEMALE X JIC FEMALE

REV

A

SCALE: 1:1

SHEET 1 OF 1

2

1

B

B

A

A