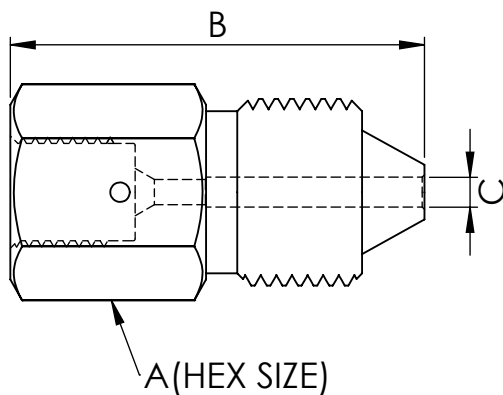


2

1

PROPRIETARY AND CONFIDENTIAL

THE INFORMATION CONTAINED IN THIS DRAWING IS THE SOLE PROPERTY OF PRESSURELINKS. ANY REPRODUCTION IN PART OR AS A WHOLE WITHOUT THE WRITTEN PERMISSION FROM PRESSURLINKS IS PROHIBITED.



DESCRIPTION	PL PART #	(A) HEX	(B) OAL	(C) THRU ϕ	WEIGHT(LBS)
1/4 MP FEM X 1/4 HP	4MF04H20	0.625	1.44	0.086	.09
1/4 MP FEM X 3/8 HP	4MF06H20	0.750	1.66	0.101	.16
1/4 MP FEM X 9/16 HP	4MF09H20	1.125	1.80	0.101	.43
3/8 MP FEM X 1/4 HP	6MF04H20	0.750	1.66	0.086	.13
3/8 MP FEM X 3/8 HP	6MF06H20	0.750	1.86	0.120	.17
3/8 MP FEM X 9/16 HP	6MF09H20	1.125	1.93	0.182	.45
9/16 MP FEM X 1/4 HP	9MF04H20	1.000	2.19	0.086	.30
9/16 MP FEM X 3/8 HP	9MF06H20	1.000	2.41	0.120	.34
9/16 MP FEM X 9/16 HP	9MF09H20	1.125	2.50	0.182	.56
3/4 MP FEM X 1/4 HP	12MF04H20	1.375	2.21	0.086	.53
3/4 MP FEM X 3/8 HP	12MF06H20	1.375	2.43	0.120	.57
3/4 MP FEM X 9/16 HP	12MF09H20	1.375	2.55	0.182	.70
1 MP FEM X 1/4 HP	16MF04H20	1.750	2.70	0.086	1.02
1 MP FEM X 3/8 HP	16MF06H20	1.750	2.93	0.120	1.07
1 MP FEM X 9/16 HP	16MF09H20	1.750	3.04	0.182	1.18

PressureLinks
High Performance Fittings

TITLE:
**205 MP FEMALE X HP MALE
MASTER LIBRARY**

SIZE A	DWG. NO. MP FEMALE X HP MALE	REV A
------------------	--	-----------------

SCALE: 1:1 SHEET 1 OF 1

2

1